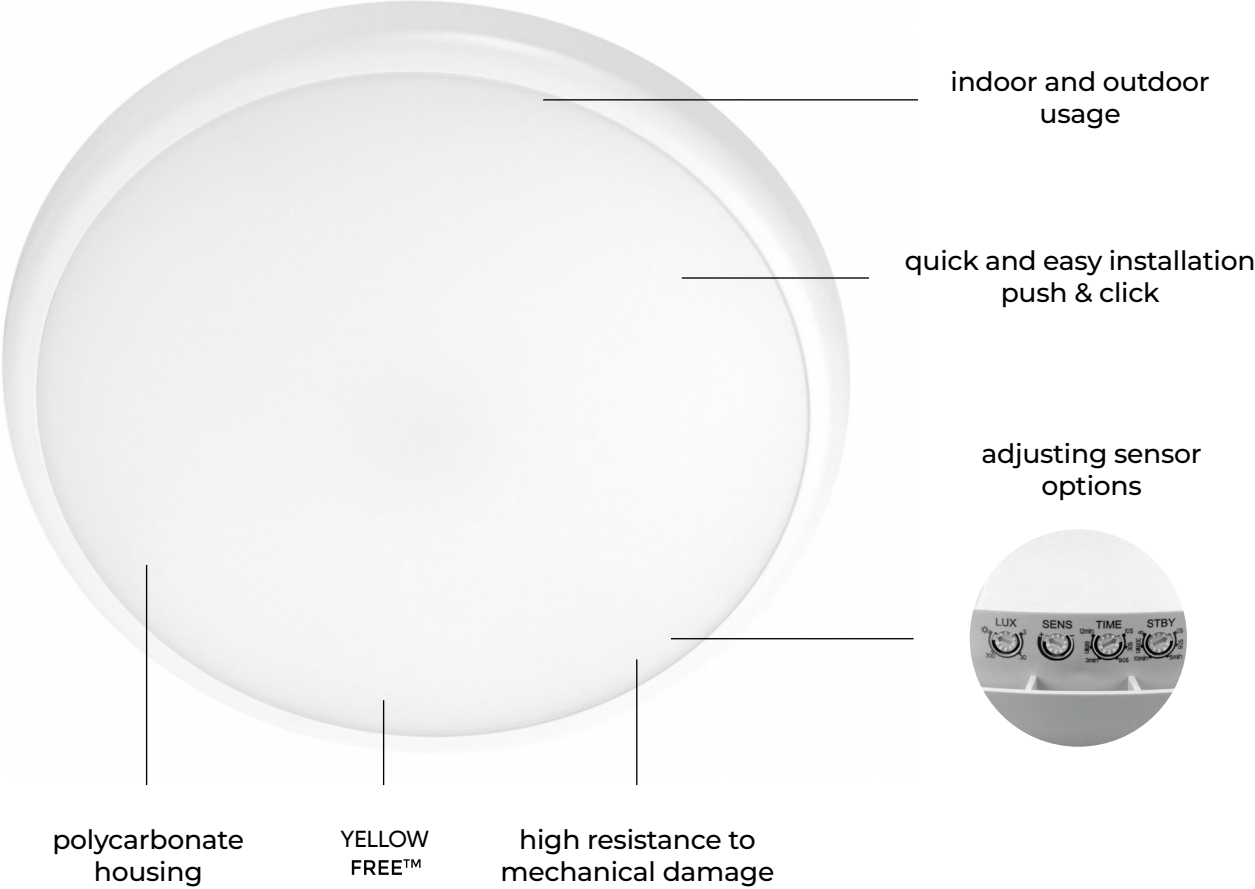


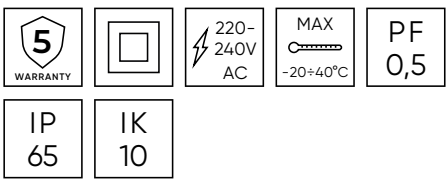
LED line



LUNAR



LUNAR



EFFICACY 85-100 lm/w

Power [W]:
16-22

Luminous flux [lm]:
1600-2200

Beam angle [°]:
120

Colour temperature [K]:
4000

Lifetime [h]:
L70B50 - 50.000

Housing:
polycarbonate

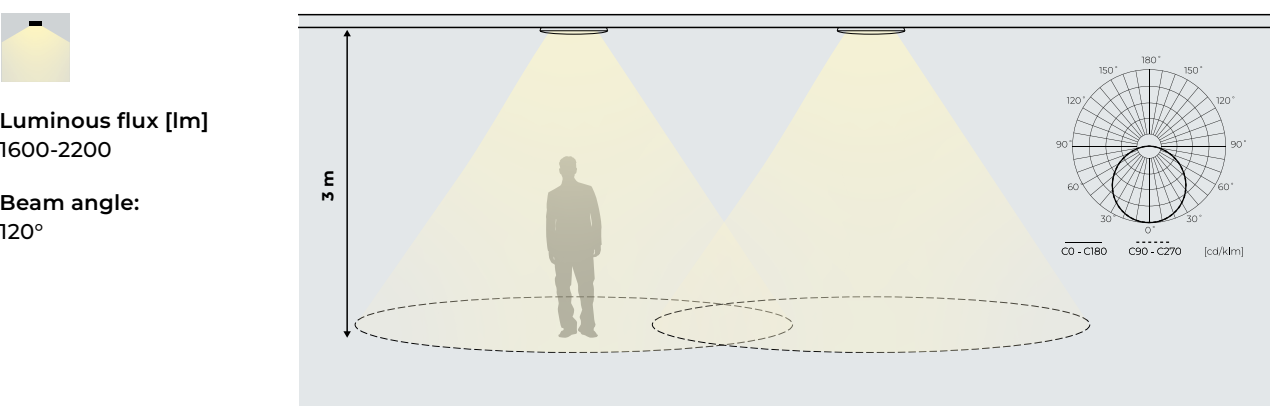
Light distributions

The plafon features a wide 120° beam angle, ensuring uniform and diffused light distribution across the entire space. Ideal for general lighting with minimal shadowing.

Wide and even light distribution – illuminates a large area without harsh shadows or spotlight focus.

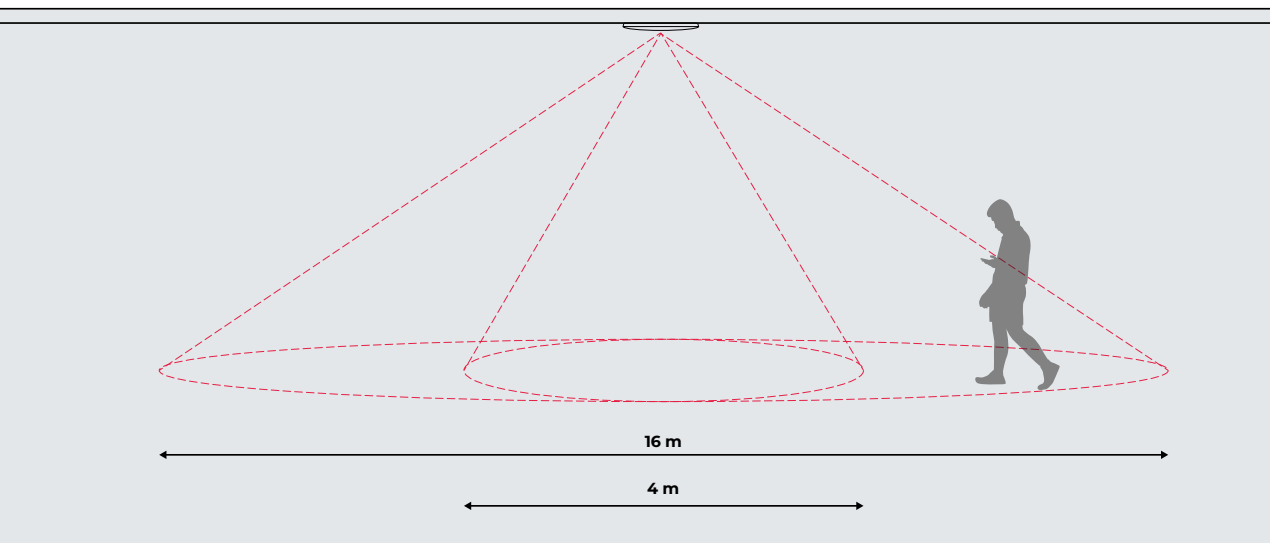
Optimization of luminaire placement – the wide angle reduces the risk of dark zones, which makes it possible to reduce the number of luminaires in the room while maintaining adequate light levels.

Application of LUNAR – staircases and walkways, building entrances and exterior canopies, public and industrial facilities, common parts in residential and commercial developments.



Microwave motion sensor

The motion detector is designed to flexibly adapt the detection zone to different usage conditions. With an adjustable detection range of 4m to 16m, the device provides high functionality in both smaller and larger spaces.



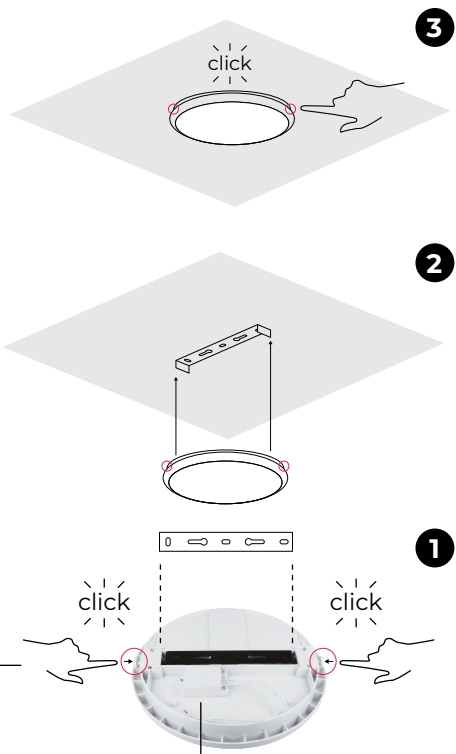
Easy Installation & Motion Sensor

The LUNAR ceiling lamp features an intuitive Push & Click mounting system for quick and effortless installation. With just two buttons, the mounting plate easily detaches for secure ceiling attachment, allowing the luminaire to snap into place – no extra tools required.

Equipped with a smart motion sensor, LUNAR dynamically adjusts brightness and operation time, ensuring energy-efficient lighting and full control over its performance. The Standby Dimming Mode provides soft illumination after motion detection ceases, enhancing safety and comfort in hallways, stairwells, and shared spaces.

Push and click – tool-free detachment of the mounting plate with two buttons.

Junction box – enables quick and secure wiring for a clean installation.



The LUNAR ceiling lamp features a motion and light sensor that adjusts lighting automatically. With adjustable LUX, SENS, TIME, and STBY settings, users can control activation, detection range, and illumination duration.

LUX – It is used to adjust day or night operation. When the knob is set in the sun (max) position the LUNAR can work both day and night. When the knob is set to position 3 (minimum) plafon will work at night with ambient light less than 3 lux.

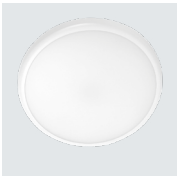
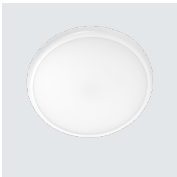
SENS – sensor detection sensitivity adjustment from 4m (-) to 16m (+).

TIME – adjustable lighting time from the moment motion is detected. Operates from min. 10 sec. to max. 12 min.

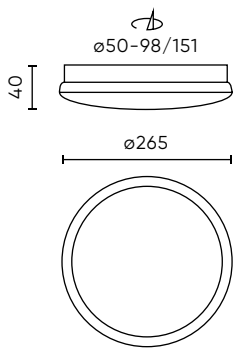
STBY – the standby time of the light after the disappearance of motion. The light will be dimmed to 20% value and will remain at this level for the set time on the knob STBY. Adjustable from 0 sec. to infinity. In addition, the plafon is equipped with **SoftDIM function**, which guarantees smooth and comfortable dimming.

Ceiling lamp LUNAR

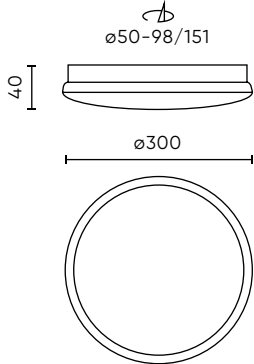
SYMBOL	POWER [W]	BEAM ANGLE [°]	COLOUR TEMPERATURE [K]	LUMINOUS FLUX [lm]	MOTION SENSOR	EEL
470577-II	16	120	4000	1600		A1GD
470584-II	16	120	4000	1600		
470591-II	22	120	4000	2200		A1GD
470607-II	22	120	4000	2200		



DIMENSIONS [mm]



16W
470577-II
470584-II



22W
470591-II
470607-II



LED line

LEDIN Group Sp. z o.o.
Dębowa 1
07-410 Tobolice
Poland

export@ledline.pl
ledline.eu



/LEDIN Group Sp. z o.o.



/LED line



/LED line